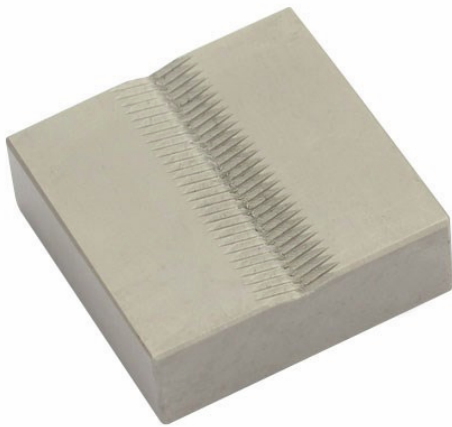


# KERN AD 0038

**KERN**

Jaws with V-grip



## Pictograms

### STANDARD



## Category

Brand	Sauter
Product category	Measurementtechnology
Product group	Jaws, V-Grip

## Construction

Dimension (W×D×H)	30×30×8 mm
Dimension housing (W×D×H)	30×30×8 mm
Dimensions completely mounted (W×D×H)	30×30×8 mm
Material	steel, nickel-plated
Material display housing	steel, hardened
Tensile/compressive force [Max]	1 kN
Maximum clamp width	30 mm
Clamping width	10 mm

## Environmental conditions

Storage temperature [Min]	-10 °C
Storage temperature [Max]	40 °C

## Packing & Shipping

Readability force [d] (N)	14 d
Dimensions packaging (W×D×H)	30×30×8 mm
Net weight	0,26 kg
Shipping method	Parcel service
Net weight approx.	0,30 kg
Gross weight approx.	0,30 kg
Shipping weight	0,26 kg